

Supplementary information for

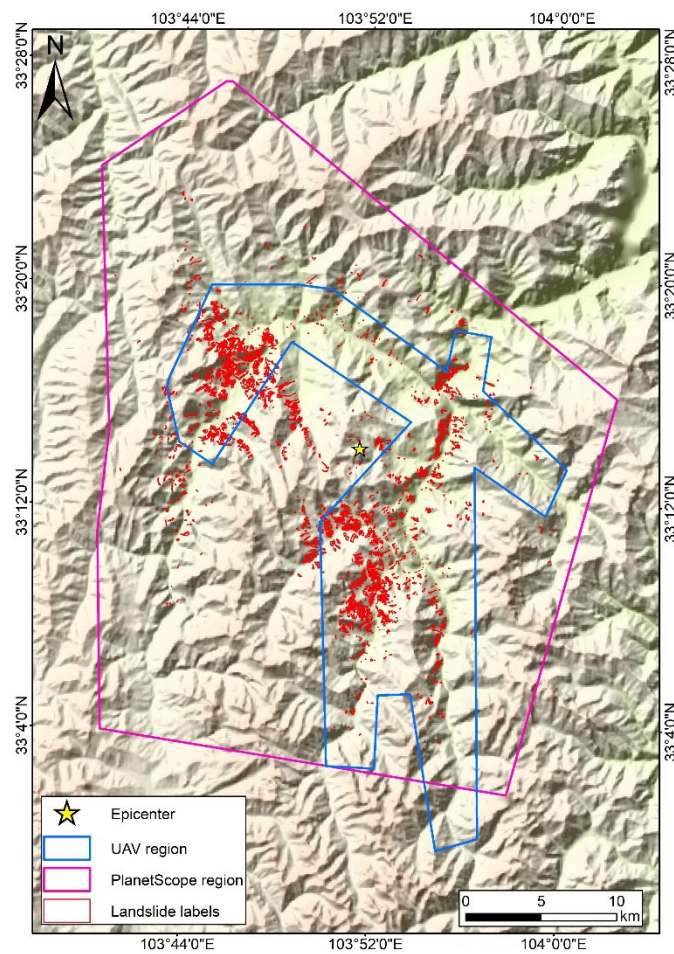
**A globally distributed dataset of coseismic landslide mapping  
via multi-source high-resolution remote sensing images**

**This file includes:**

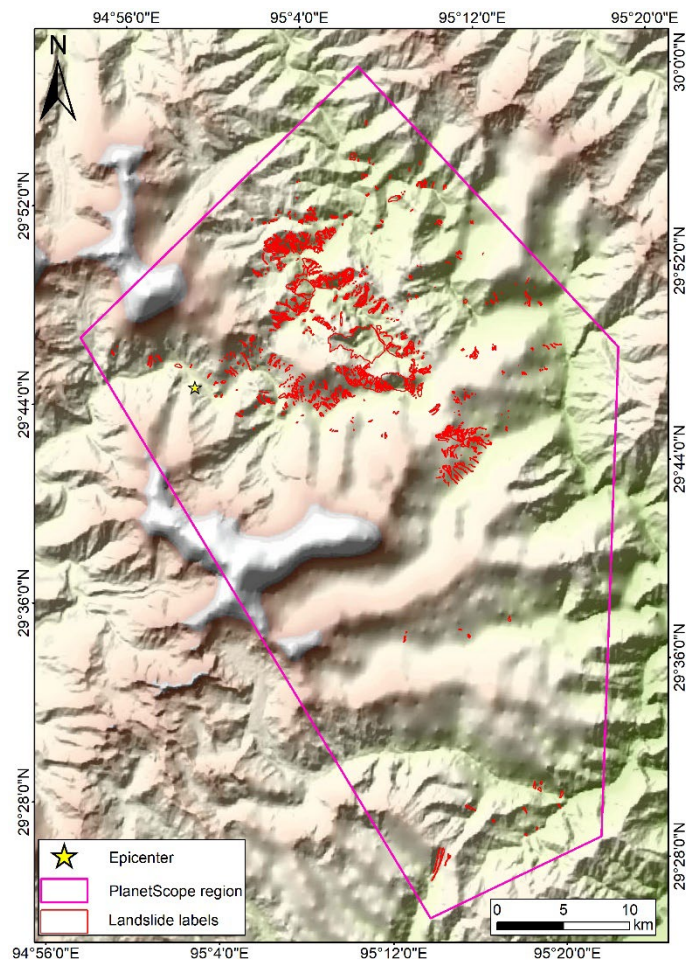
Figure S1 to S9

GDCLD data description and usage instructions

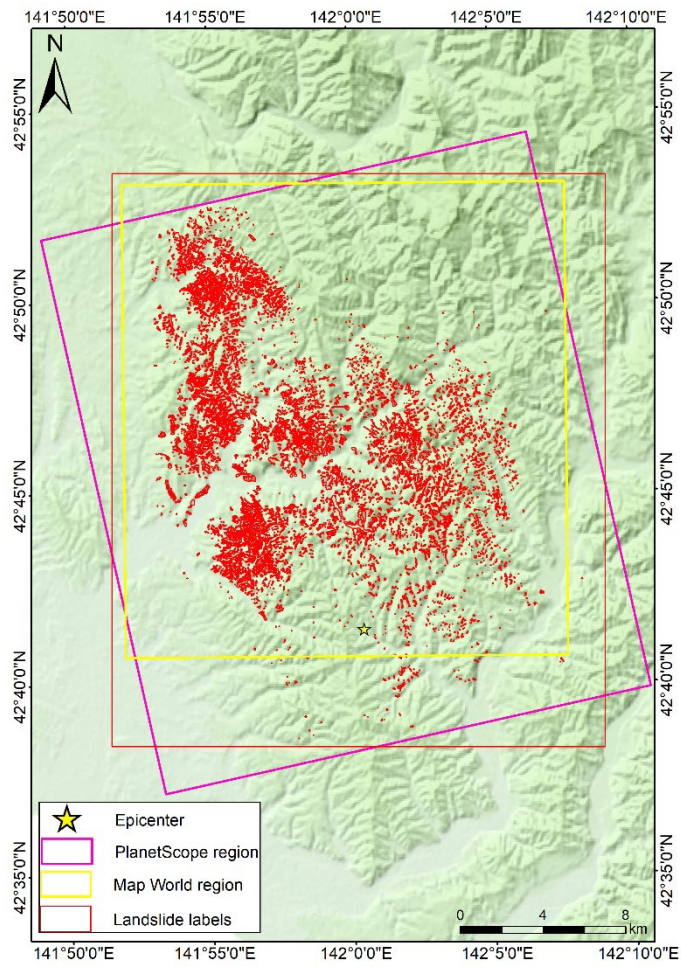
**Figure S1 to S9:**



**Figure.S1** Multi-source image range and landslide distribution of Jiuzhaigou earthquake

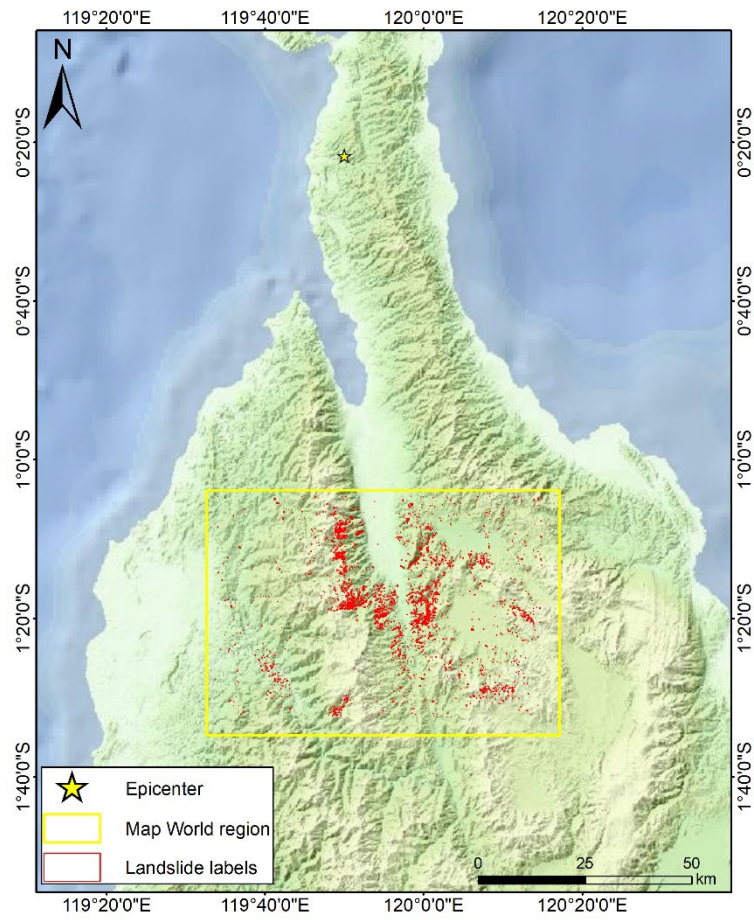


**Figure.S2** PlanetScope image range and landslide distribution of the Mainling earthquake

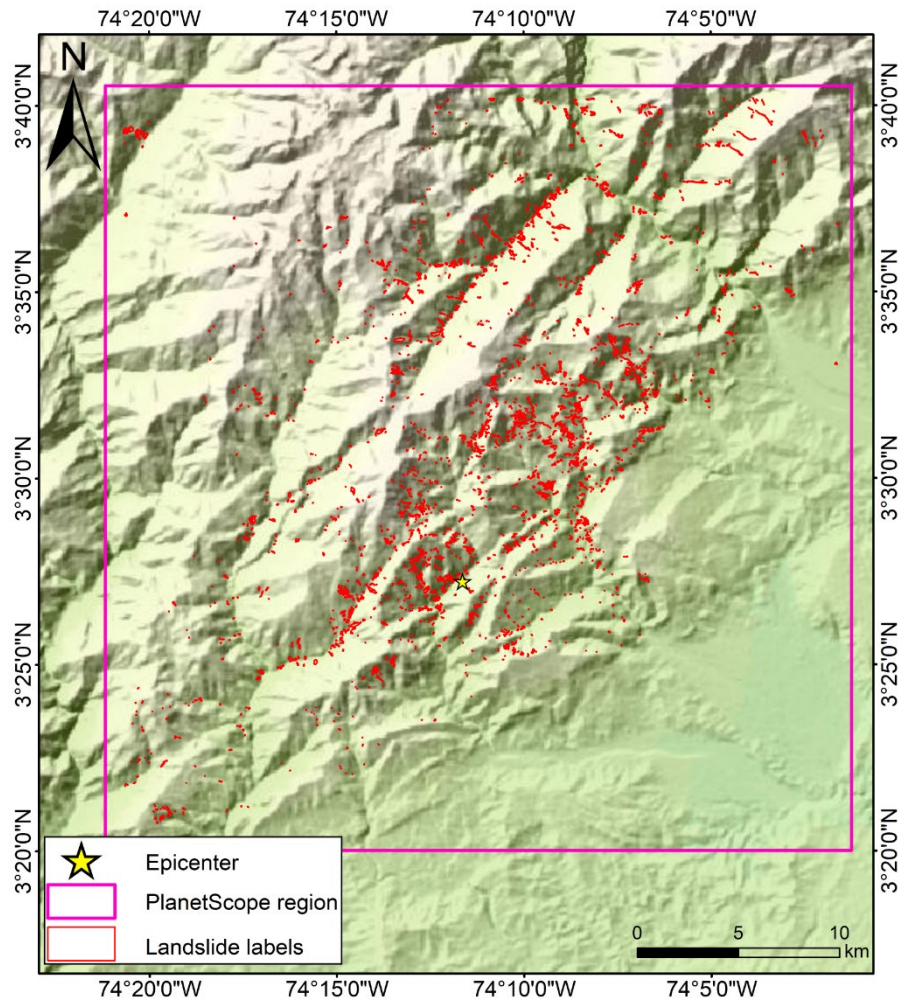


**Figure.S3** Multi-source image range and landslide distribution of Hokkaido earthquake

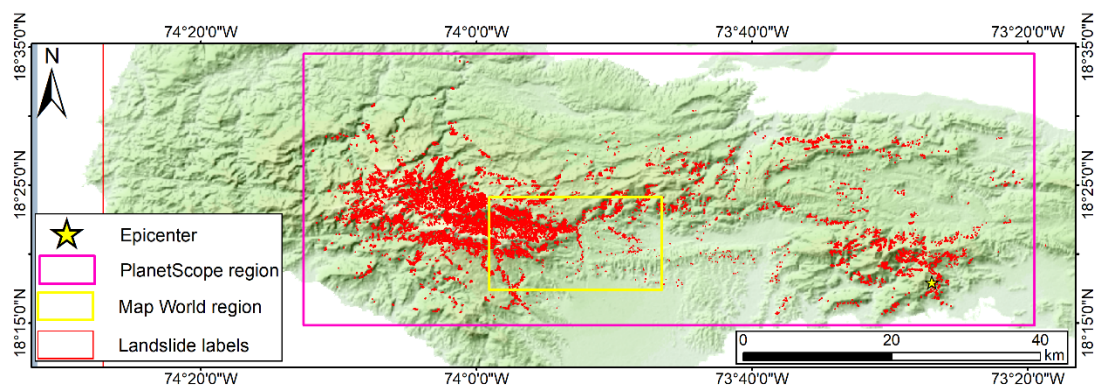




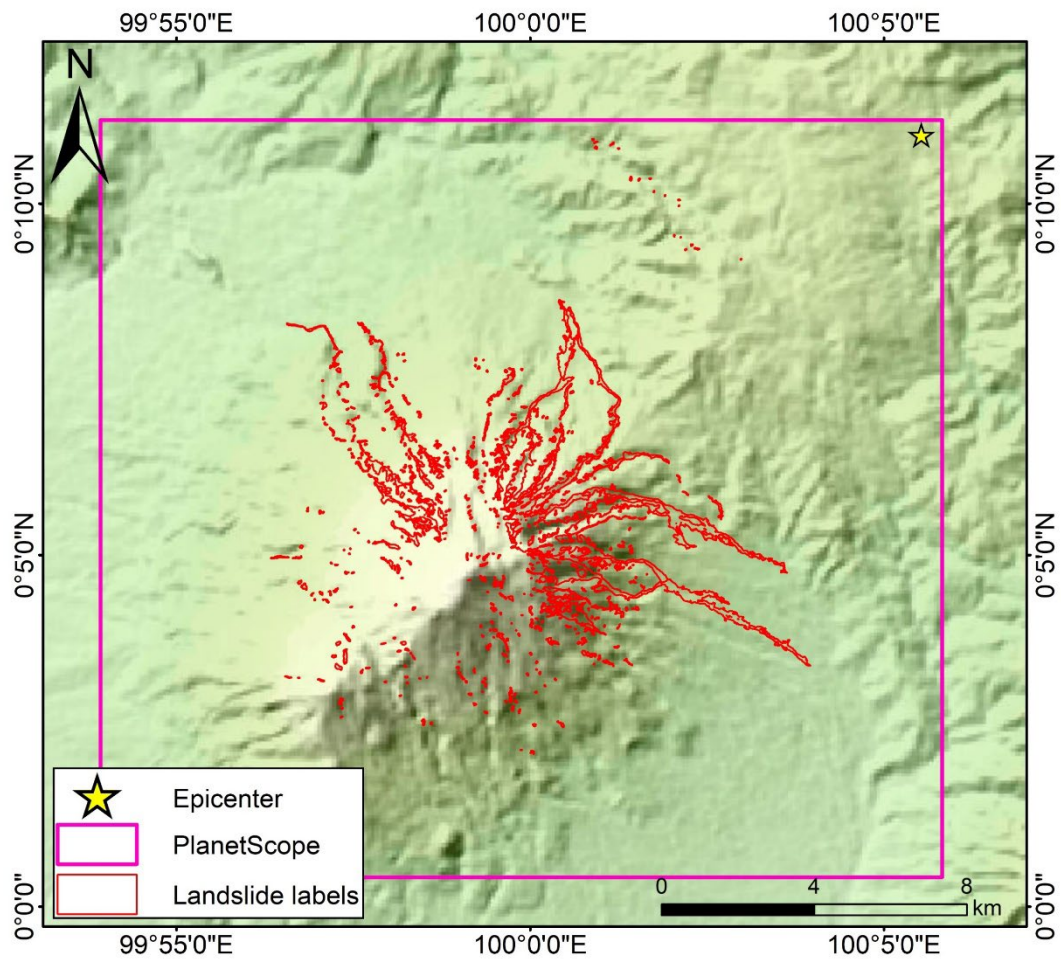
**Figure.S4** Map World image range and landslide distribution of the Palu



**Figure.S5** PlanetScope image range and landslide distribution of the Mesetas earthquake

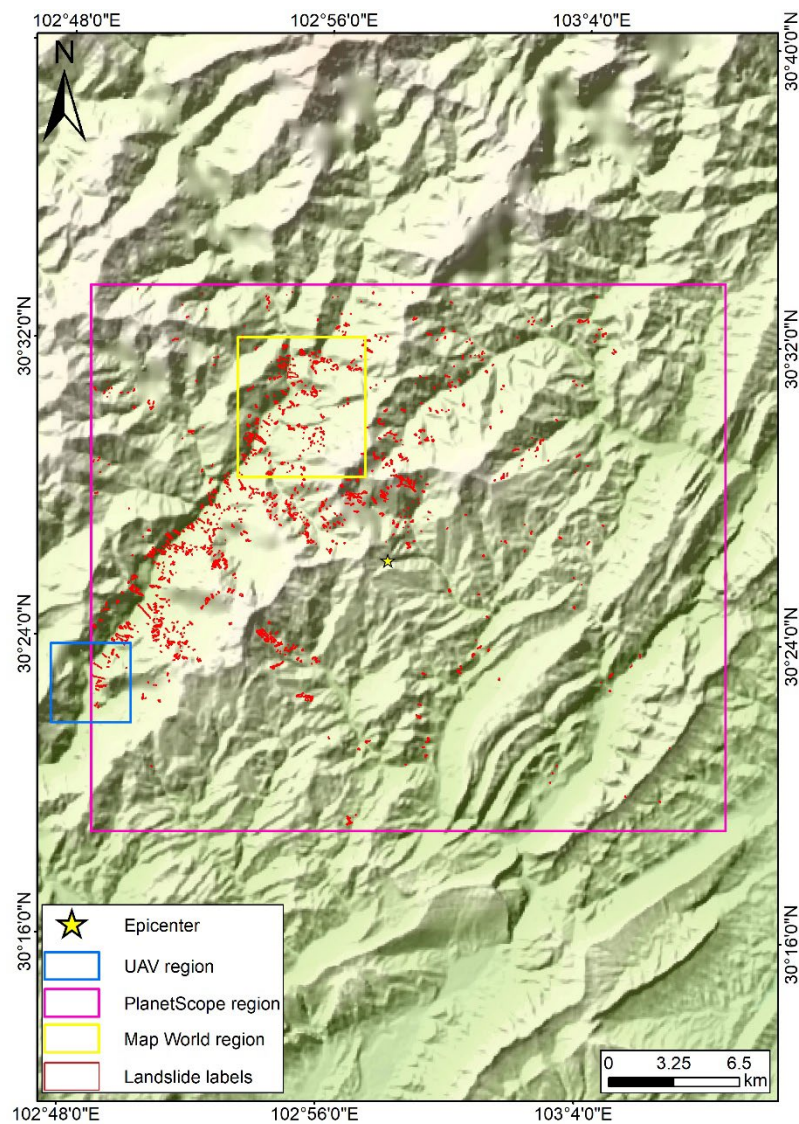


**Figure.S6** Multi-source image range and landslide distribution of Nippes earthquake.



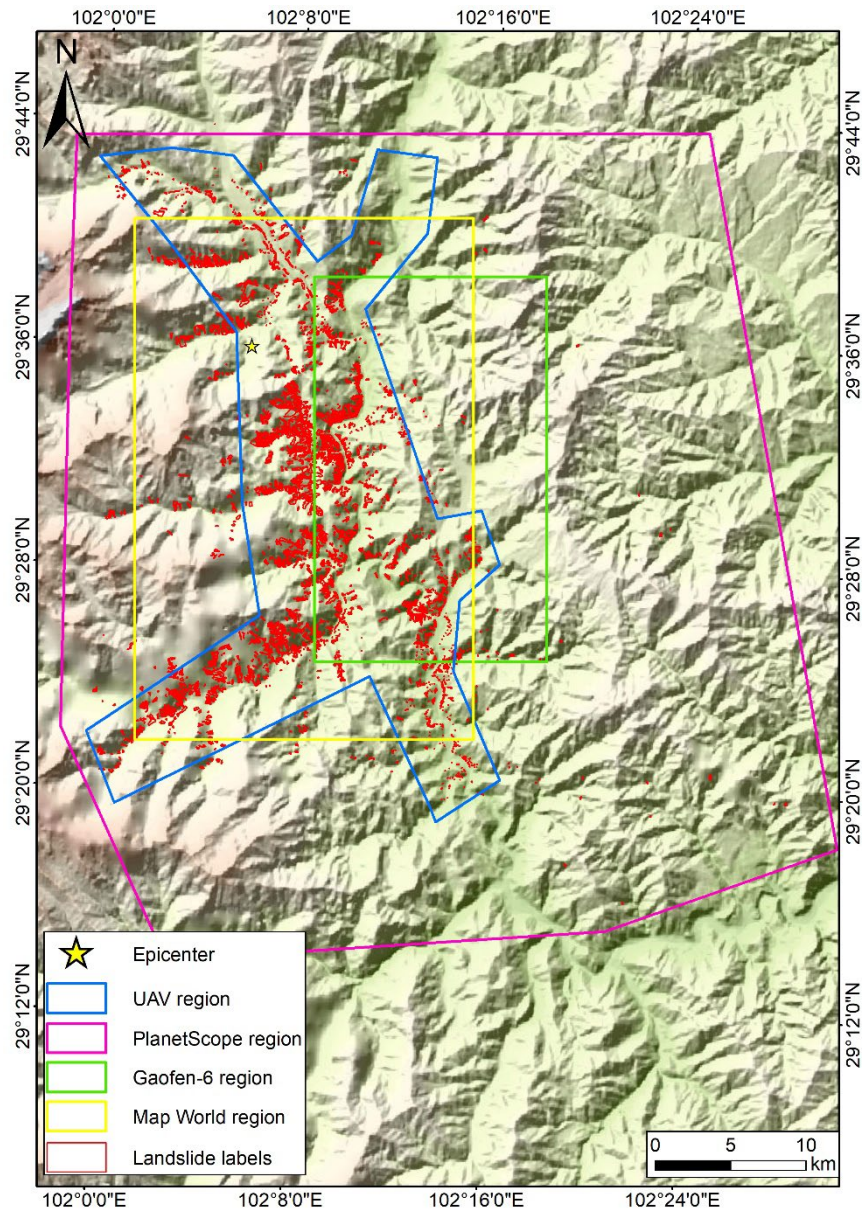
**Figure.S7** PlanetScope image range and landslide distribution of the Sumatra earthquake





**Figure.S8** Multi-source image range and landslides distribution of Lushan earthquake.





**Figure.S9** Multi-source image range and landslide distribution of Lushan earthquake.

Globally Distributed Coseismic Landslide Dataset (GDCLD):  
<https://zenodo.org/records/11369484>.

Data description:

The training dataset and the validation dataset are composed of UAV, PlanetScope, Gaofen-6 and Map World images of the 5 earthquake regions of Luding, Nippes, Hokkaido, Jiuzhaigou and Mainling. There is no overlapping area in each TIFF. The training dataset and the validation dataset are randomly divided at a ratio of approximately 0.75:0.25.

train\_dataset:

train\_data: The train dataset part of the GDCLD data set contains 11162 data matrices (TIFF), and the shape of the matrix is (1024, 1024, 3) (TIFF).

train\_label: The train dataset part of the GDCLD data set contains 11162 data matrices (TIFF), and the shape of the matrix is (1024, 1024, 1) (TIFF).

Validation\_dataset

val\_data: The validation dataset part of the GDCLD data set contains 4459 data matrices (TIFF), and the shape of the matrix is (1024, 1024, 3) (TIFF).

val\_label: The validation dataset part of the GDCLD data set contains 4459 data matrices (TIFF), and the shape of the matrix is (1024, 1024, 1) (TIFF).

Test\_dataset (Lushan, Sumatra, Mesetas and Palu dataset)

This package contains the original files of remote sensing images from three sources: UAV, Map World, and PlaneScope belonging to the Lushan, Sumatra, Mesetas and Palu earthquake regiones, which are used to display the test area.